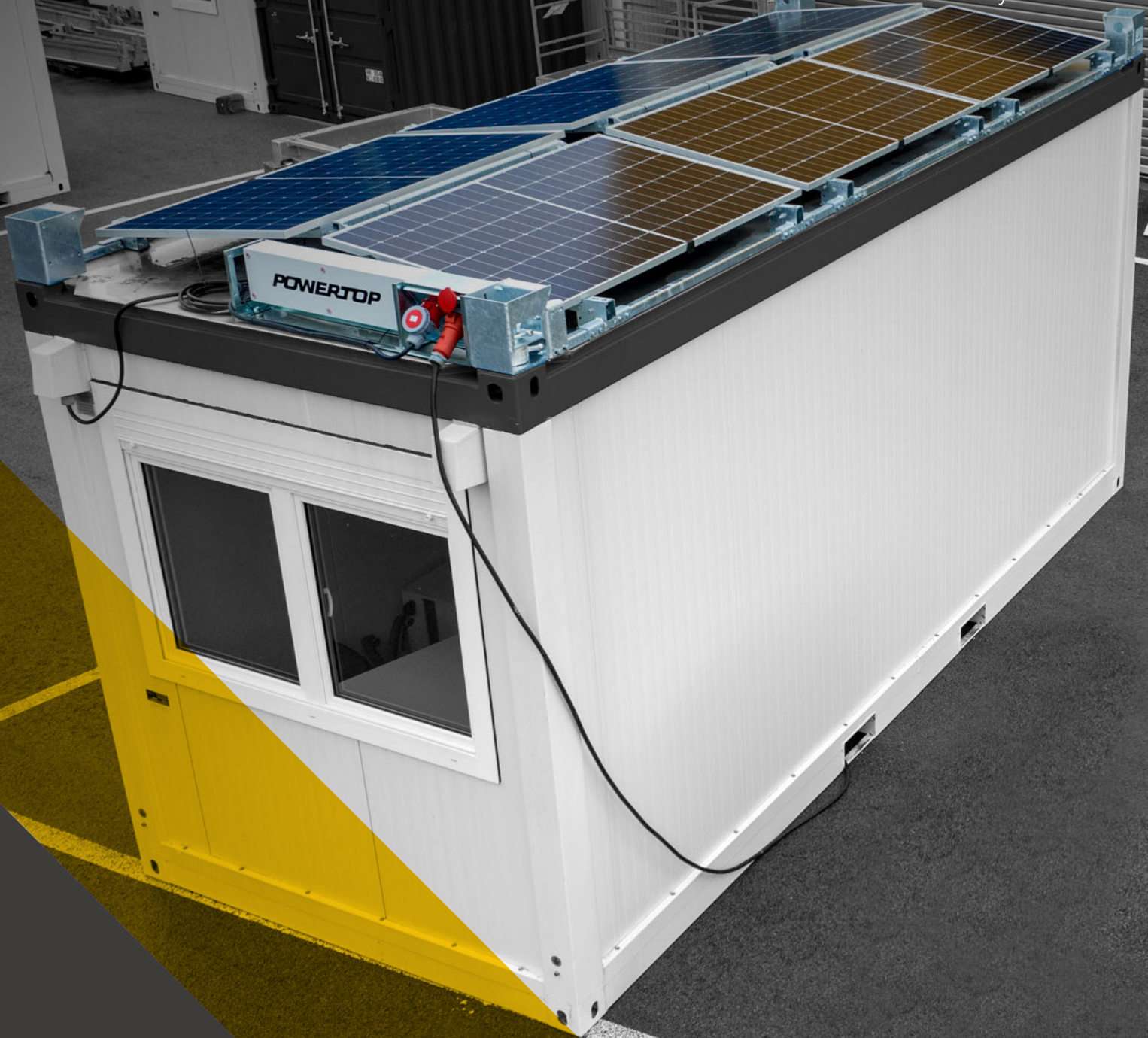




bms
best modification systems



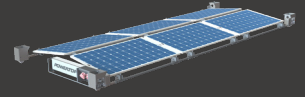
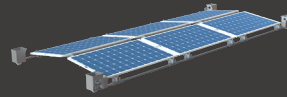
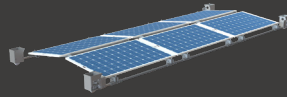
POWERTOP

**ATTACH.
CONNECT.
ENERGY.**

FLEXIBLE PLUG&PLAY SOLAR SOLUTION FOR CONTAINERS.

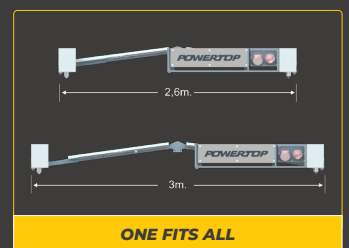
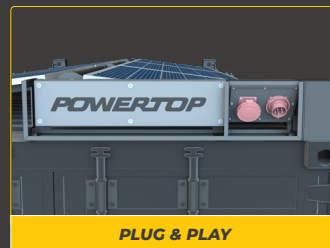
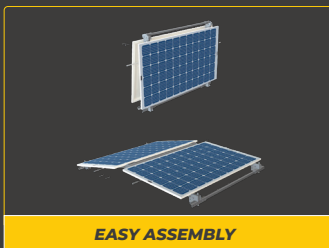


POWERTOP

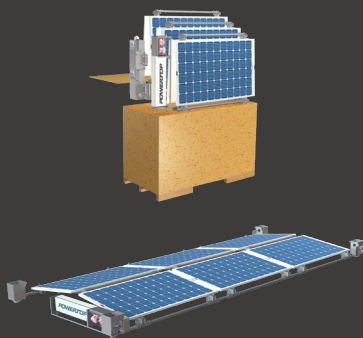


| | BASIC | COMBI | FLEX |
|-----------------|-------|-------|------|
| Transport Box | ✓ | ✓ | ✓ |
| Flex Frame | ✓ | ✓ | ✓ |
| Solar Panels | ✓ | ✓ | ✓ |
| ISO-Corners | ✓ | ✓ | ✓ |
| Micro-Inverters | | ✓ | ✓ |
| E-Box | | | ✓ |

The POWERTOP is the most flexible OUT OF THE BOX solar solution for the roof of containerised space incl. accommodation and welfare units. The ONE FITS ALL Design enables easy installation on different container sizes. The robust ISO-Corners will still allow the entire container to be lifted through the POWERTOP whilst connected. The **BASIC** version consists of the flexible frame and pre-assembled PV panels. The **COMBI** version also includes micro-inverters as well as the wiring string which can be combined with the complete Plug&Play **FLEX** version. A total of up to 5 COMBI can be combined with a FLEX to form a multiple container solution. Made in Austria.



POWERTOP FLEX TECHNISCHE INFORMATIONEN



| | |
|--------------------------|--------------------------------|
| Solar power | from 2,2 kWp |
| Connectable | yes / Flex & Combi |
| Feeding | into the existing power grid |
| Power Connection | CEE 32A 400V input/output |
| Locking | ISO-Twistlock |
| Dimensions standard | 6060 x 2440 x 280 mm |
| Dimensions telescopic | 6060 x 3000 x 280 mm |
| Dimensions Transport Box | 2.158 x 1090 x 1.405mm |
| Total weight | approx. 400 kg |
| Crain able | yes / with Container up to 5 t |
| Monitoring | via App |



bms – best modification systems GmbH
 Buchenweg 7/2 / 4484 Kronstorf / Austria
 office@bmsystems.at

www.bmsystems.at

